

RENAISSANCE ART

Unit 3

Art of the Renaissance

To make artistic creations more **realistic**, Renaissance artists experimented with new techniques. (**Realism**)

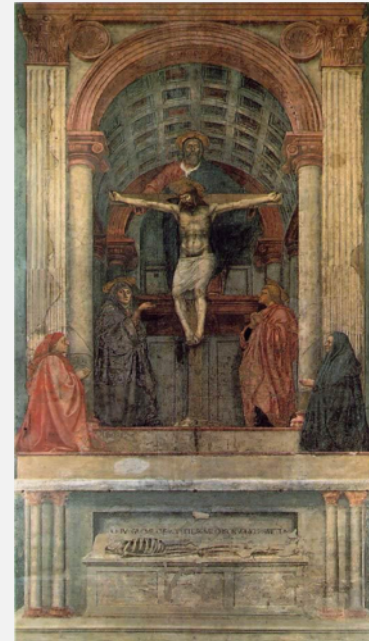
This led to the development of **Perspective** – giving a work a better sense of depth.

New oil paints, which could take weeks to dry, allowed artists to work on a single painting for long periods of time.

Architecture: a “social art” blended beauty with utility

Light and shading- bold contrasts between light and dark

Metal Engraving- gained popularity



WHAT CHARACTERISTICS DOES IT HAVE?

- Classical Greek and Roman styles
- Humanism
- Maximizing 'depth' in a picture (perspective)
- Realism/Expression
- Light and Shading



Under humanist influence art moved from symbolic representation of the person to a **life like appearance**.



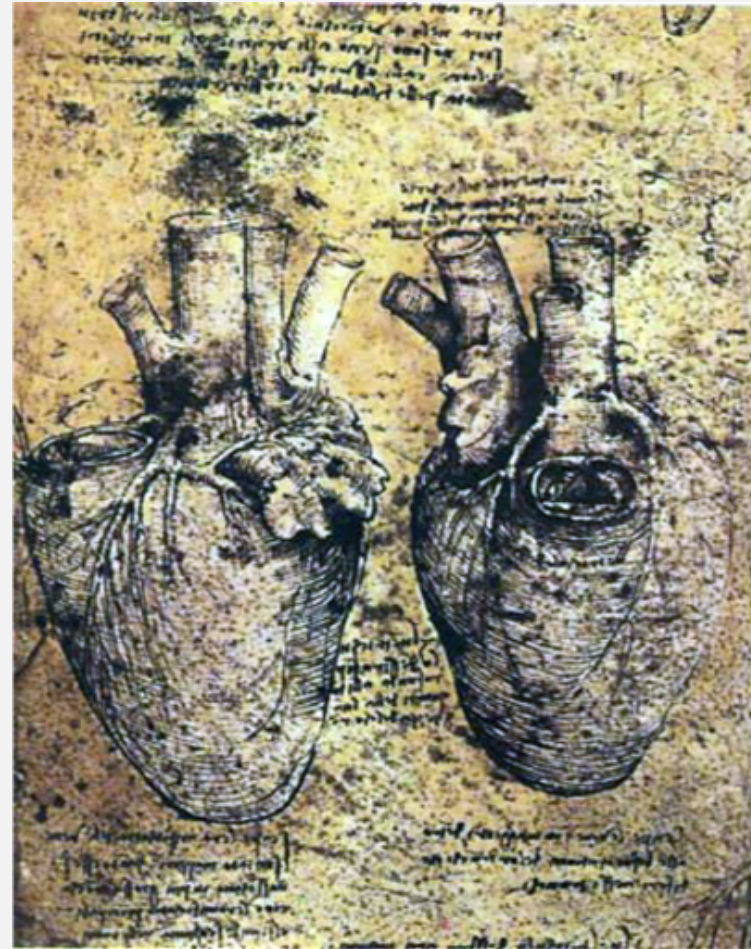
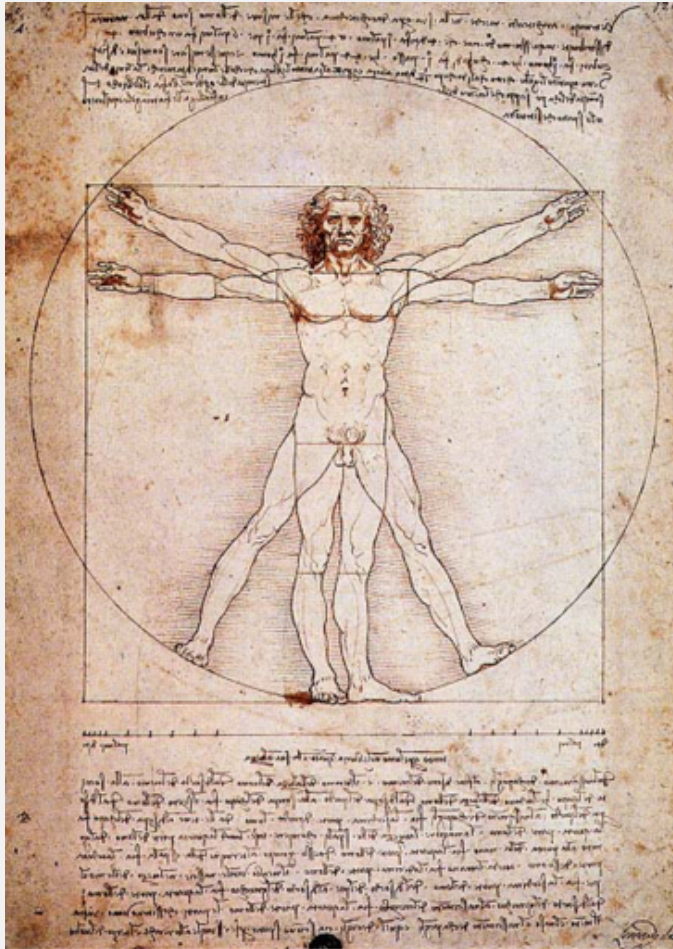
Although much of the art was still based on **Christian biblical themes**, artists also portrayed **scenes from classical mythology**.



Botticelli, *The Birth of Venus*, 1480

Anatomy was studied to portray human figures more accurately and naturally.

Studies of Human Anatomy – Da Vinci



The subtleties of gesture and expression were used to convey **human emotions**.

